

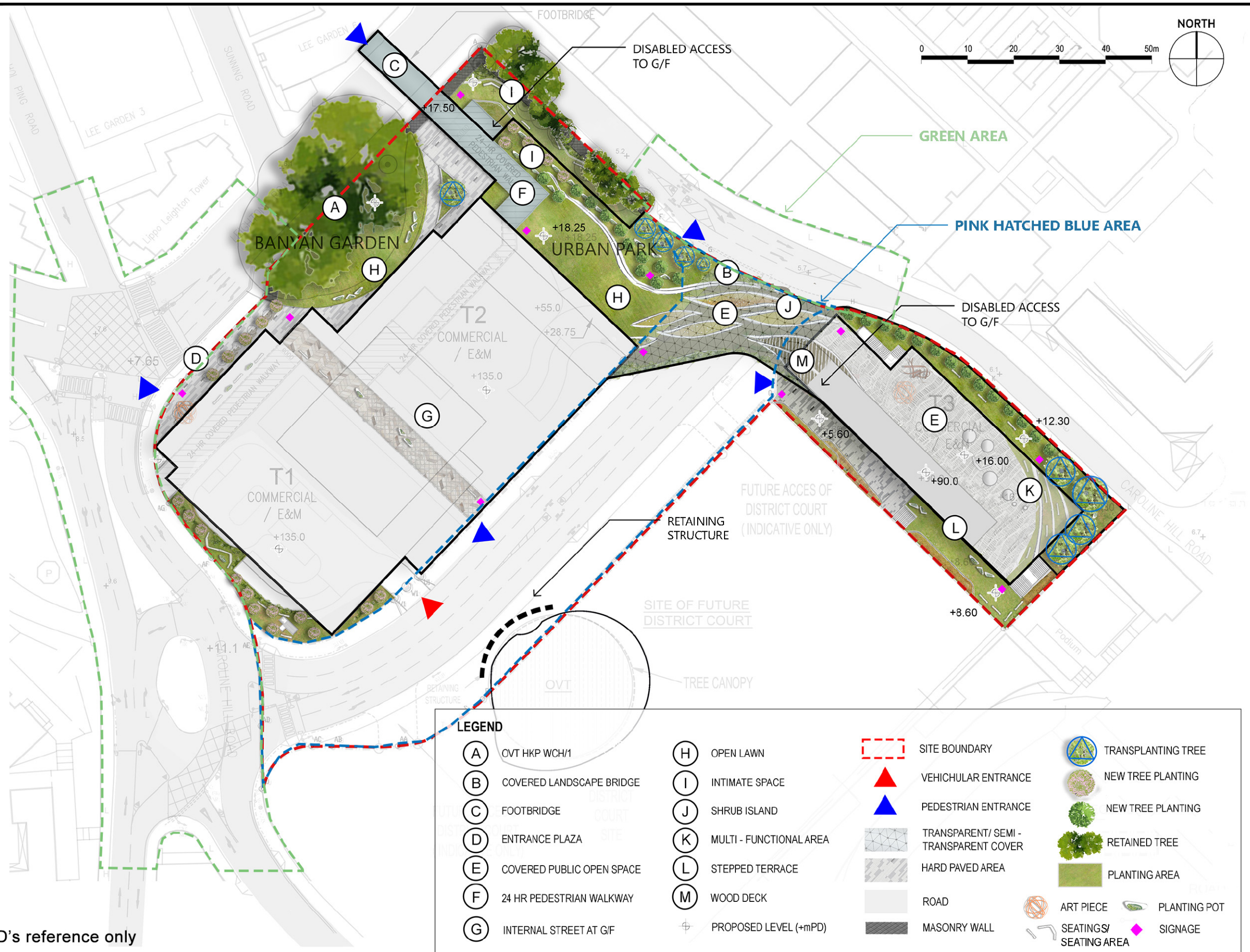


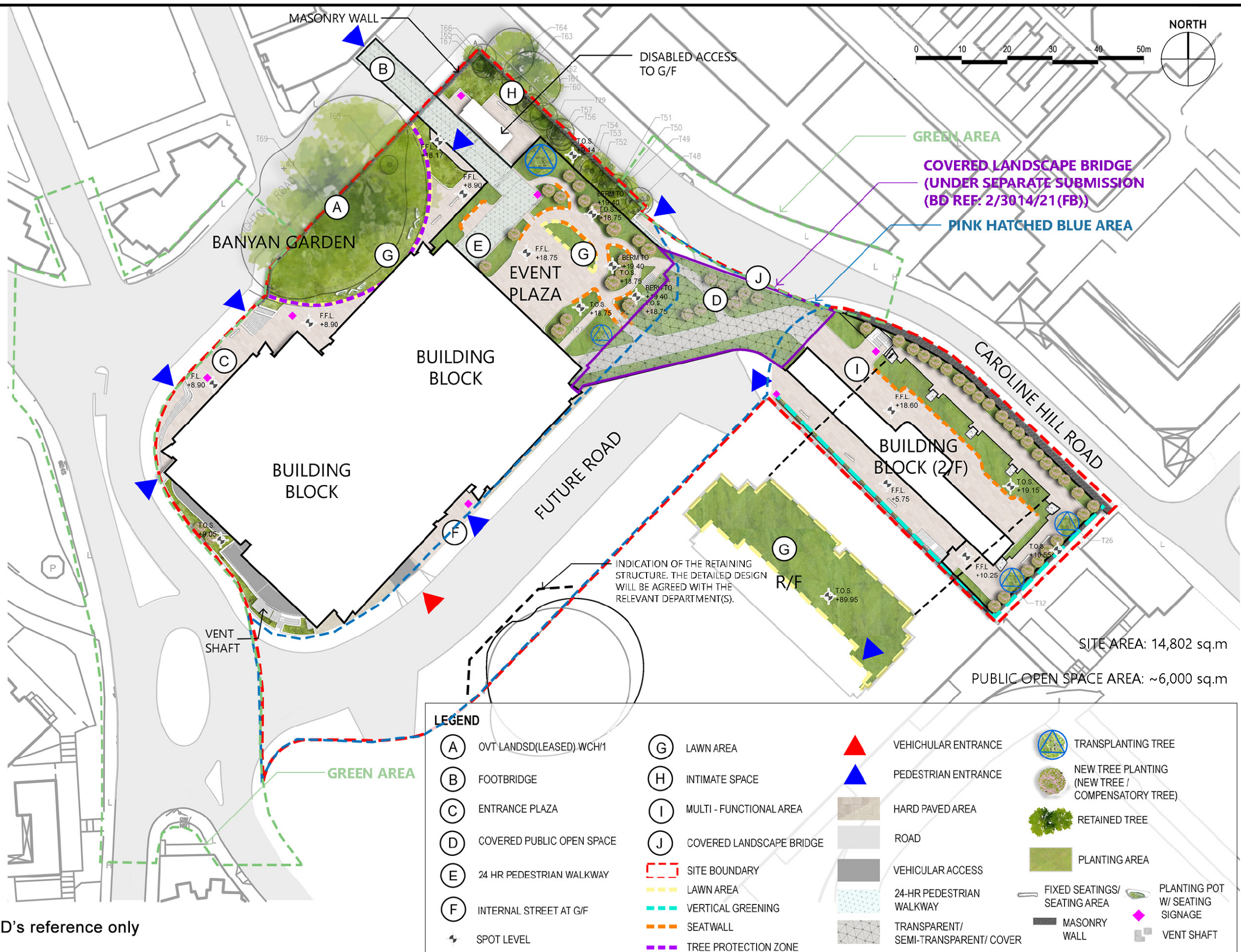
銅鑼灣

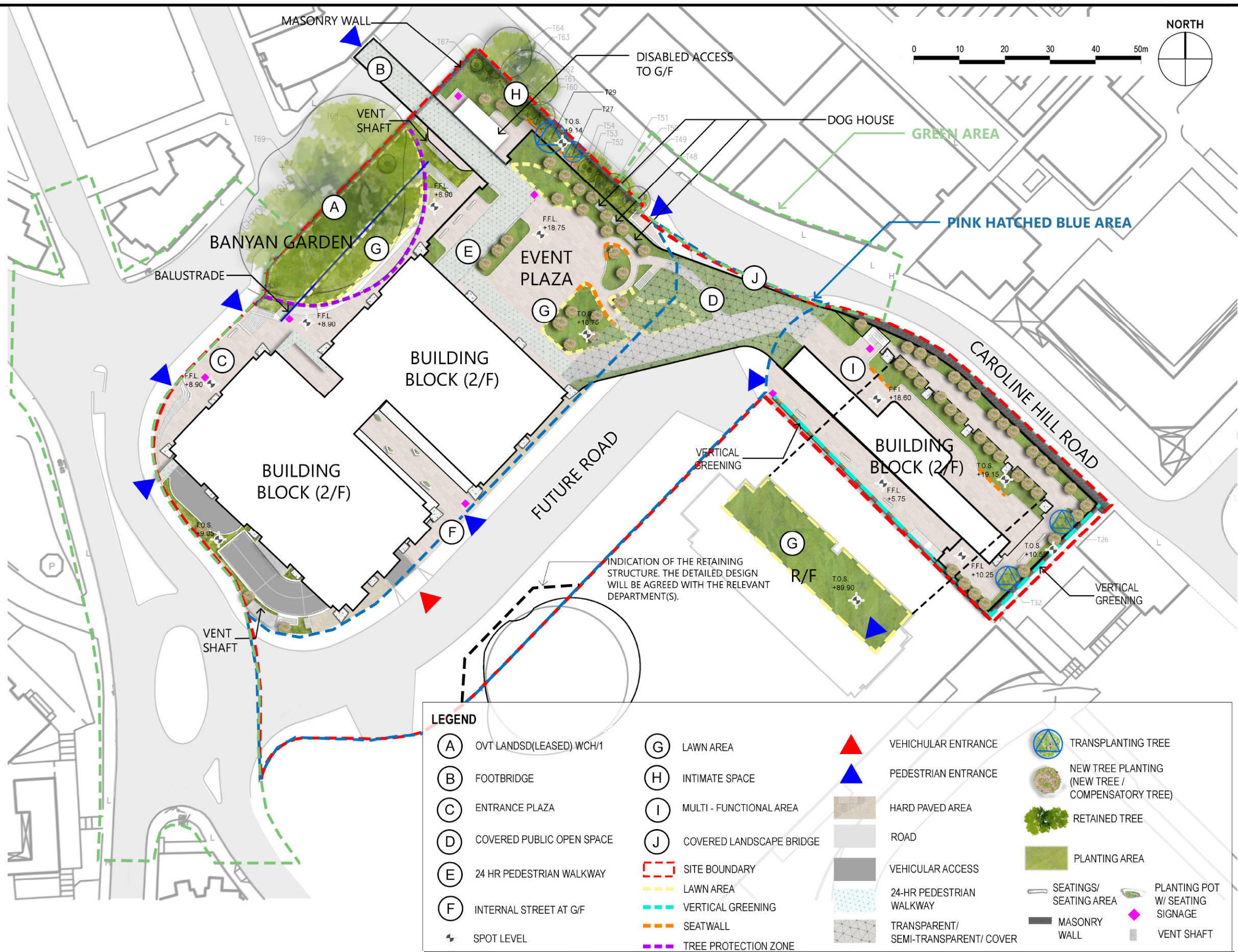
Causeway Bay

Revised Figures



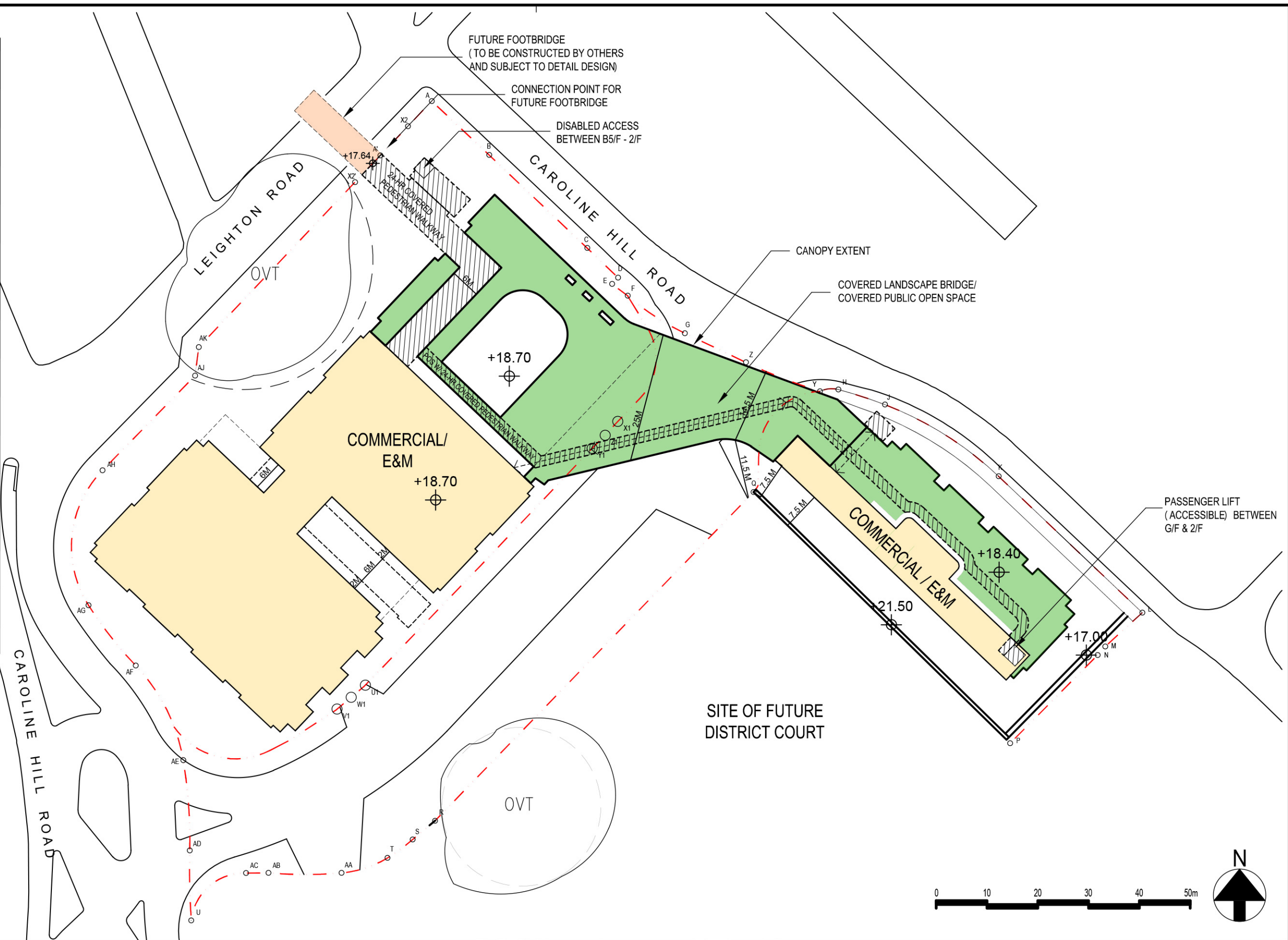


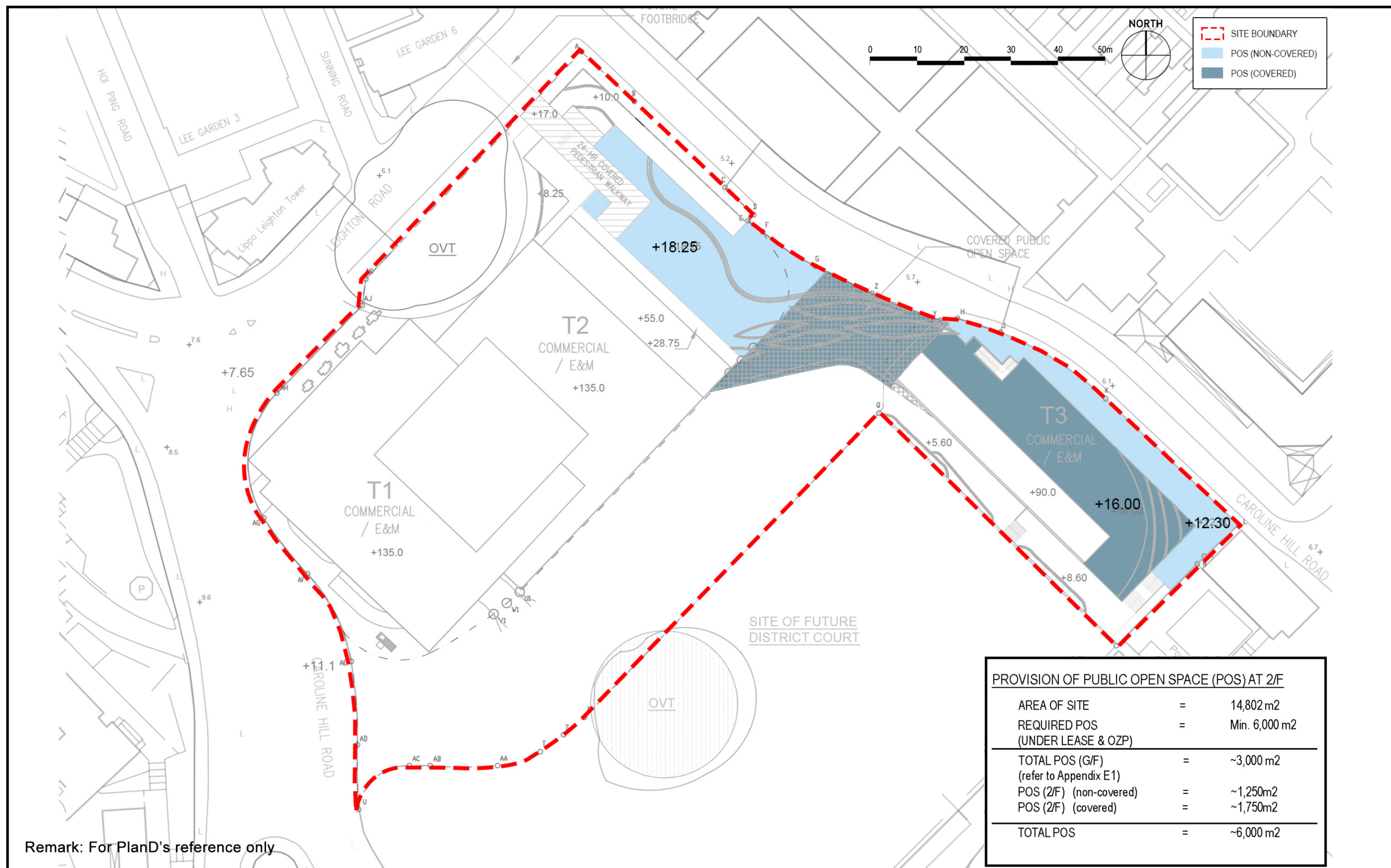


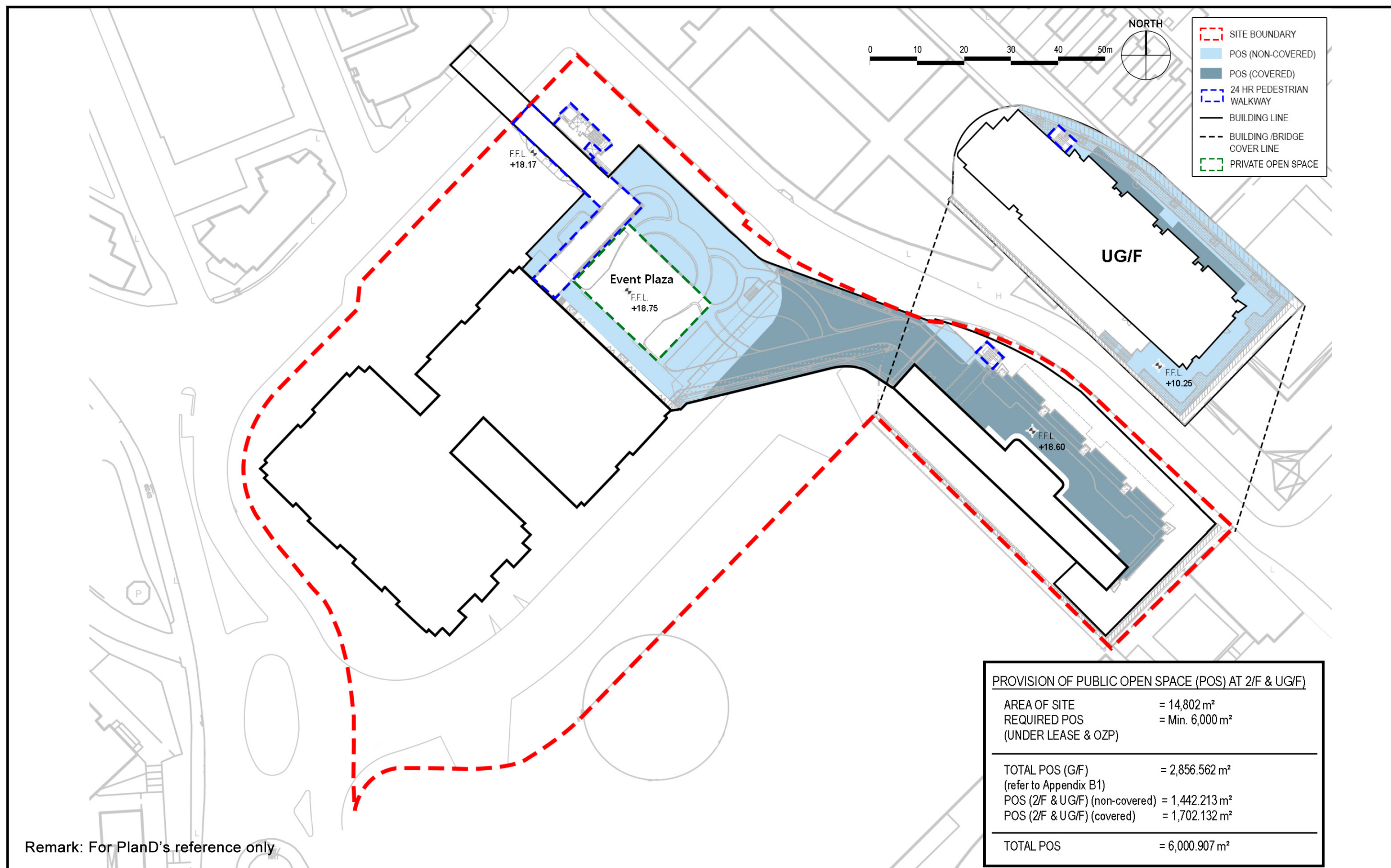


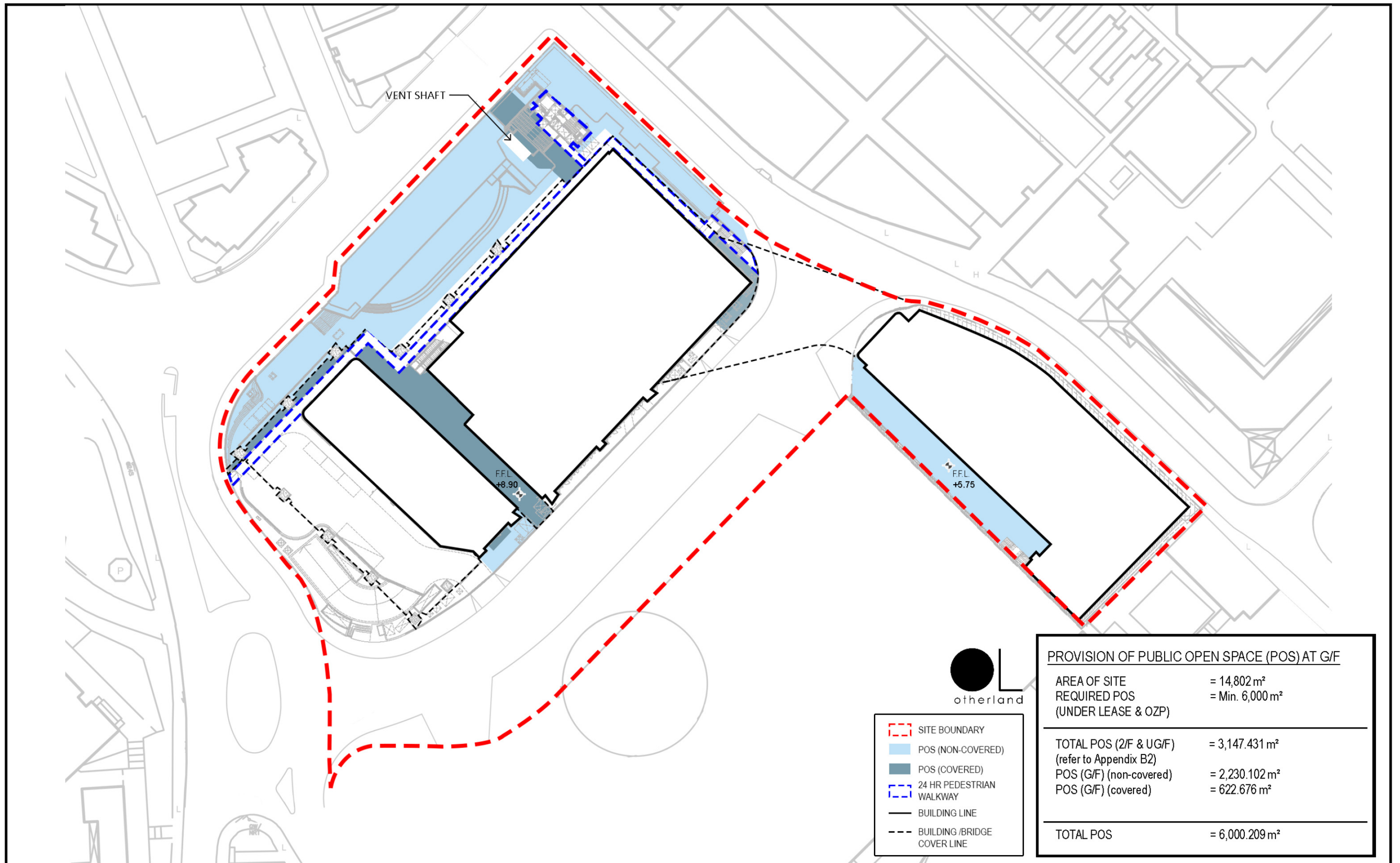
LEGEND

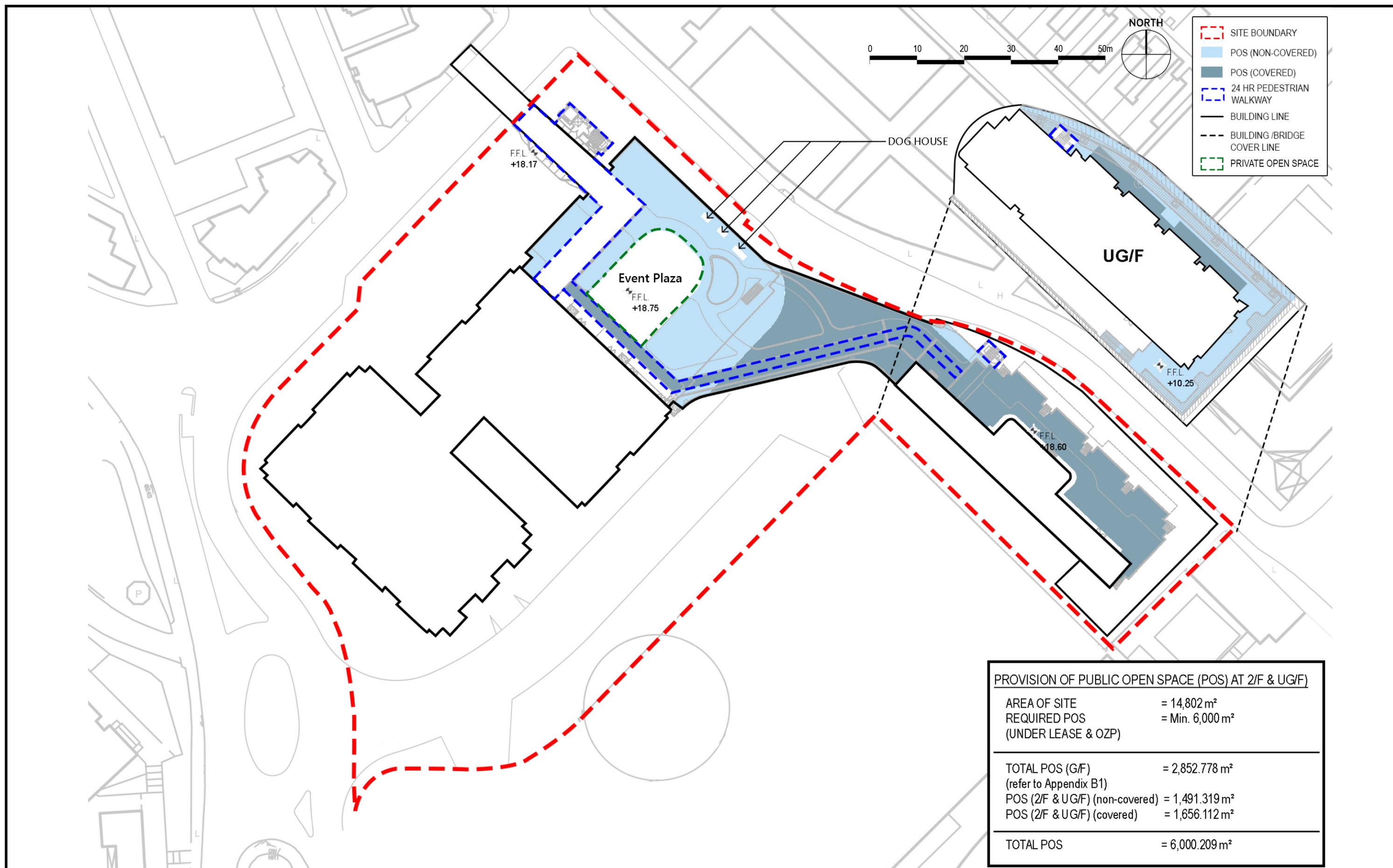
- APPLICATION SITE
- PINK HATCHED BLUE
NO STRUCTURE ERRECTED ABOVE OR
WITHIN 4M BELOW GROUND LEVEL
- PUBLIC OPEN SPACE
- COMMERCIAL/E&M
- G.I.C. FACILITIES
- FUTURE FOOTBRIDGE
- LIGHT BUSES LAYBYS
- CARPARK (PVP)
- CARPARK (PRIVATE)
- CARPARK
(G.I.C. FACILITIES)
- ACCESS ROAD
- LOADING & UNLOADING
CARPARK (PVP)
- UNEXCAVATED
- 24-HR PEDESTRIAN
WALKWAY
- PUBLIC OPEN SPACE
WITH 24-HR
PEDESTRIAN WALKWAY
- PEDESTRIAN LINK
- E&M
- CIRCULATION/
E&M











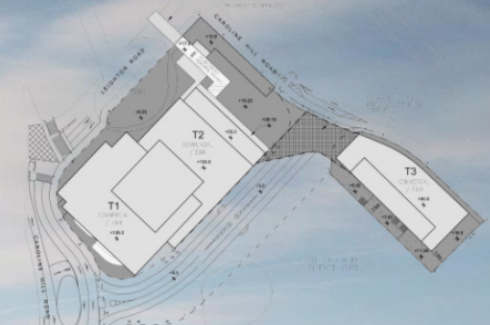
ORIGINAL SCHEME

2 towers located at the corners, leaving only residual open spaces along the periphery of the site as left-out spaces

2 towers located at the corners of the site will result in **NARROW AIR CORRIDOR** and **INCREASE VISUAL DOMINANCE OF BUILT FORMS** at street level

Greenery and open space as **RESIDUAL & LEFT-OUT SPACES** along the periphery of the site which is less enjoyable and welcoming

A VIEW
ANGLE



Remark: For PlanD's reference only

Patchway
Holdings
(HK)
Limited



**Submission of Layout Plan and Application
for Commercial Development on IL No. 8945
Causeway Bay, Hong Kong**



Title

Artist's Impression of Planning Department Rezoning Conceptual Scheme

Scale

N.T.S.

Date

January 2024

Figure No.

4.7

APPROVED DEVELOPMENT PROPOSAL

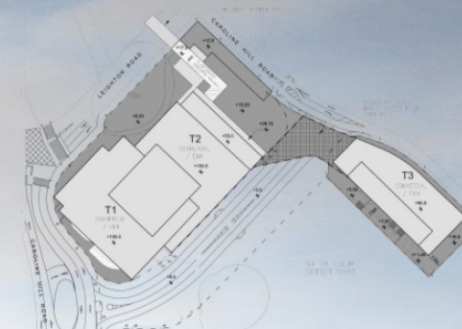
By combining the two towers and shifting to the NW corner in order to provide a large open space to the NE and a wider air corridor

By combining the 2 towers and shifting them to the NW corner, a **WIDER AIR CORRIDOR** could be provided which can help to facilitate air ventilation at street level

COVERED LANDSCAPE BRIDGE – A **BRIDGE CONNECTION** between Edged Blue and Edged Red Sites to **ENHANCE PEDESTRIAN CONNECTIVITY**, with **QUALITY LANDSCAPE & GREENERY**

Provision of a **LARGE & DESIGNATED OPEN SPACE** to the NE corner of the site with the provision of greenery and landscape for better enjoyment and **REDUCE VISUAL DOMINANCE OF BUILT FORMS** at street level

A VIEW ANGLE



Remark: For PlanD's reference only

Patchway Holdings (HK) Limited



Submission of Layout Plan and Application for Commercial Development on IL No. 8945 Causeway Bay, Hong Kong



Title

Artist's Impression of Approved Development Proposal

Scale

N.T.S.

Date

January 2024

Figure No.

4.8



* IMAGE FOR REFERENCE ONLY, SUBJECT TO DETAIL DESIGN

Patchway
Holdings
(HK)
Limited



**Submission of Layout Plan and Application
for Commercial Development on IL No. 8945
Causeway Bay, Hong Kong**



Title		Artist's Impression of Amended Scheme		
Scale	N.T.S.	Date	March 2025	Figure No. 4.9a



* IMAGE FOR REFERENCE ONLY, SUBJECT TO DETAIL DESIGN

Patchway
Holdings
(HK)
Limited



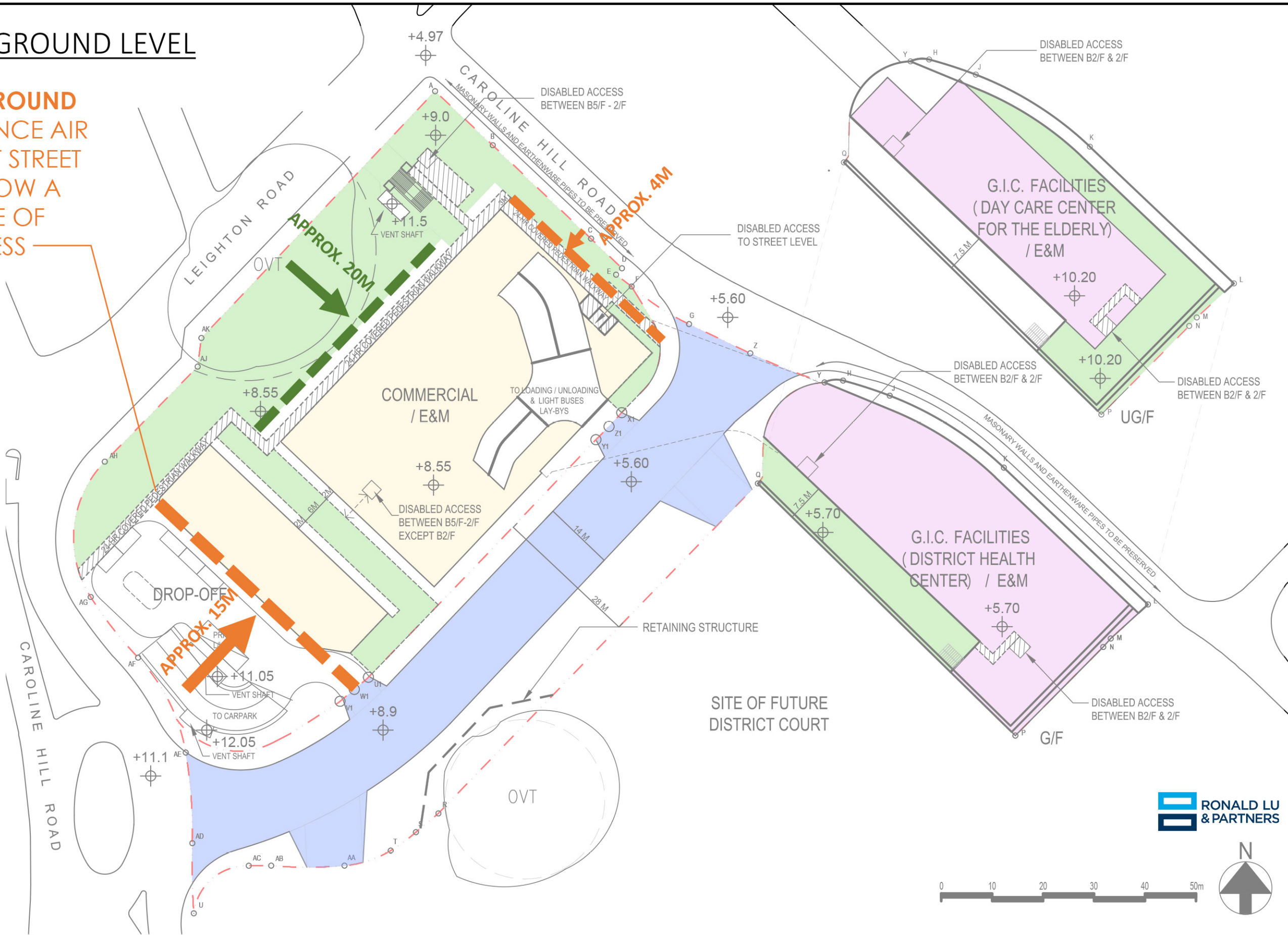
**Submission of Layout Plan and Application
for Commercial Development on IL No. 8945
Causeway Bay, Hong Kong**



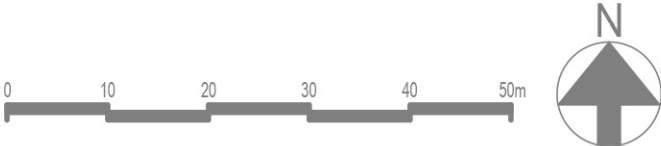
Title	Artist's Impression of Amended Scheme		
Scale	N.T.S.	Date	March 2025
Figure No.	4.9b		

SET-BACK AT GROUND LEVEL

SET-BACK AT GROUND LEVEL TO ENHANCE AIR VENTILATION AT STREET LEVEL AND ALLOW A HIGHER DEGREE OF VISUAL OPENNESS

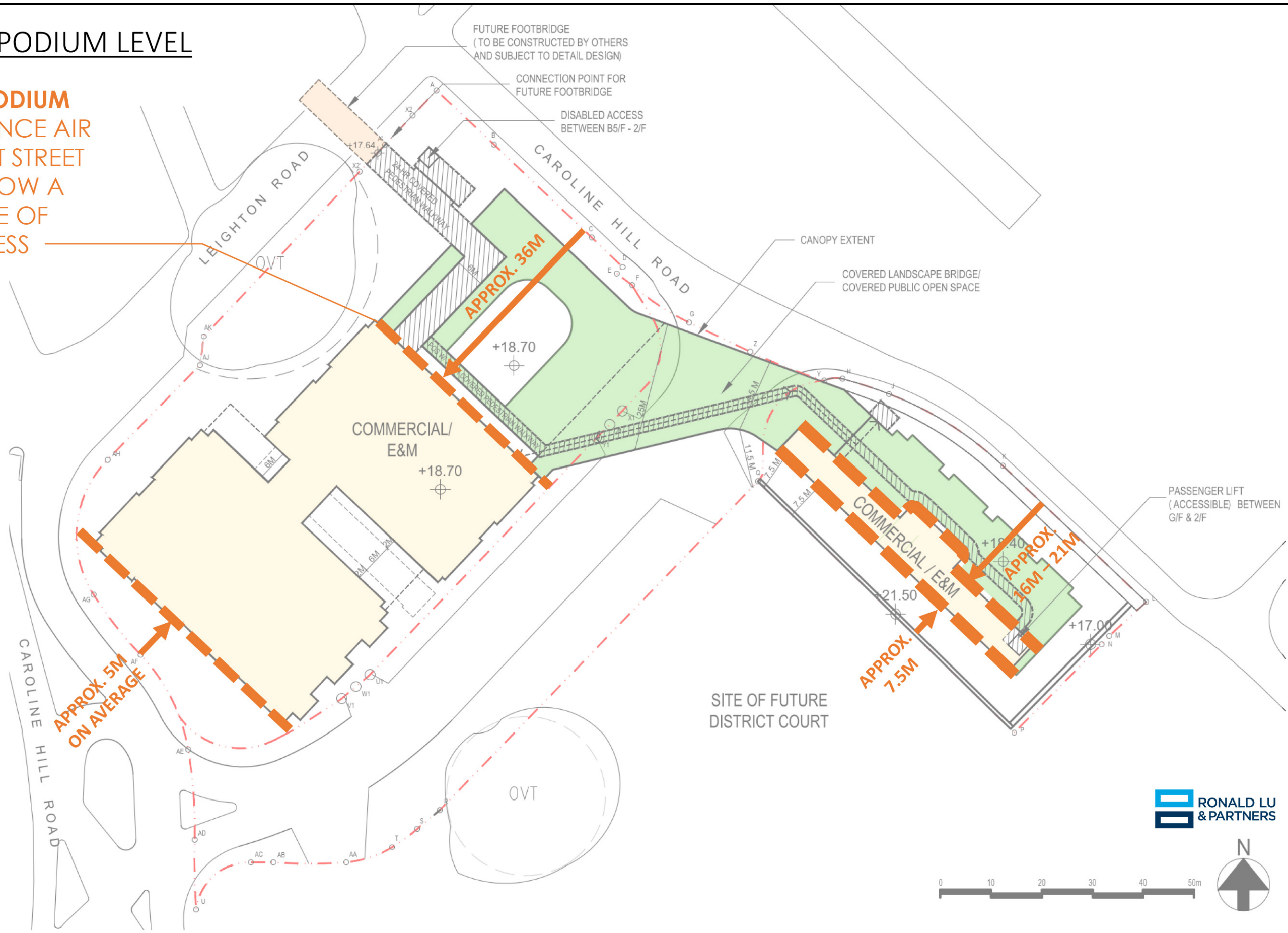


RONALD LU & PARTNERS

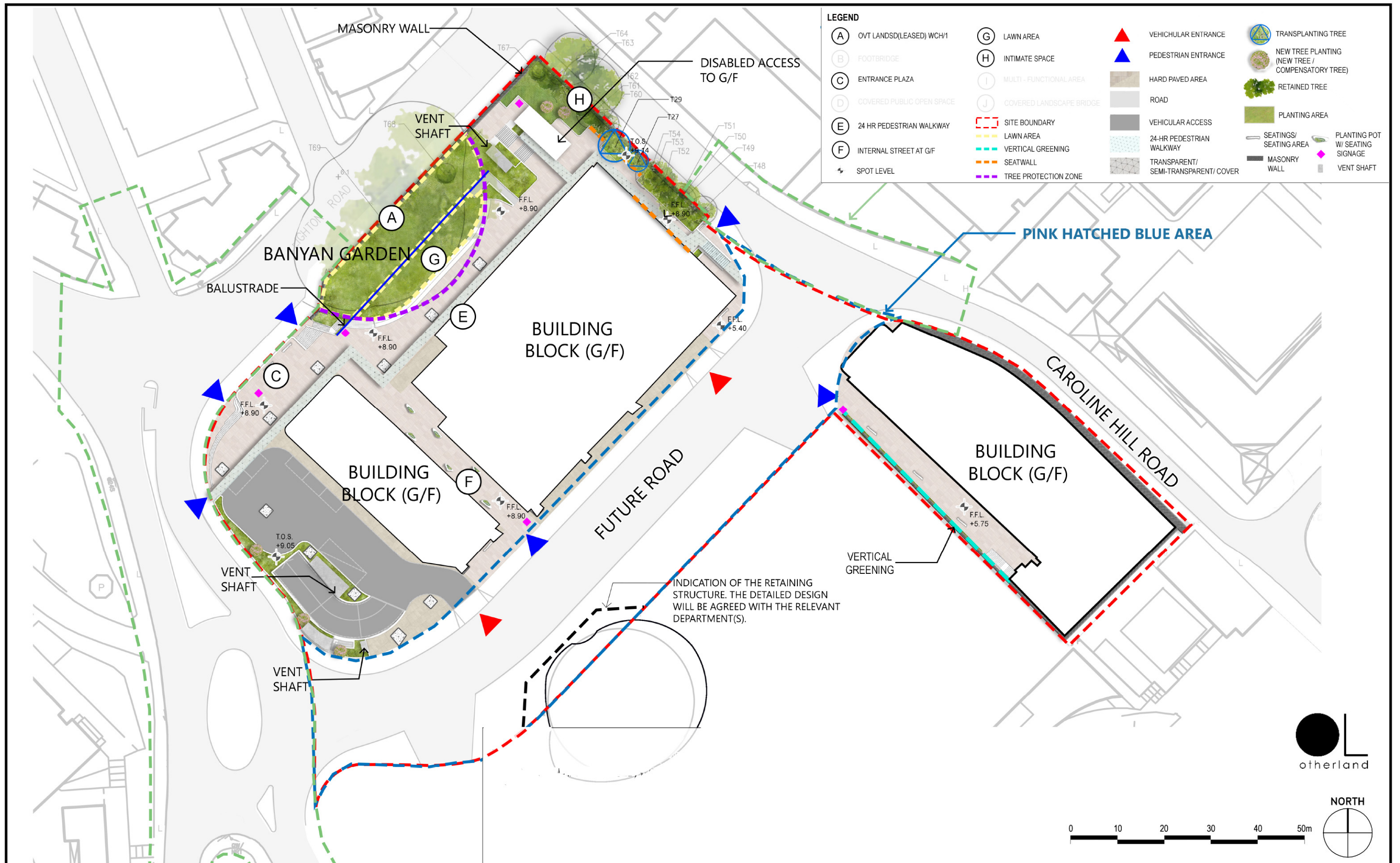


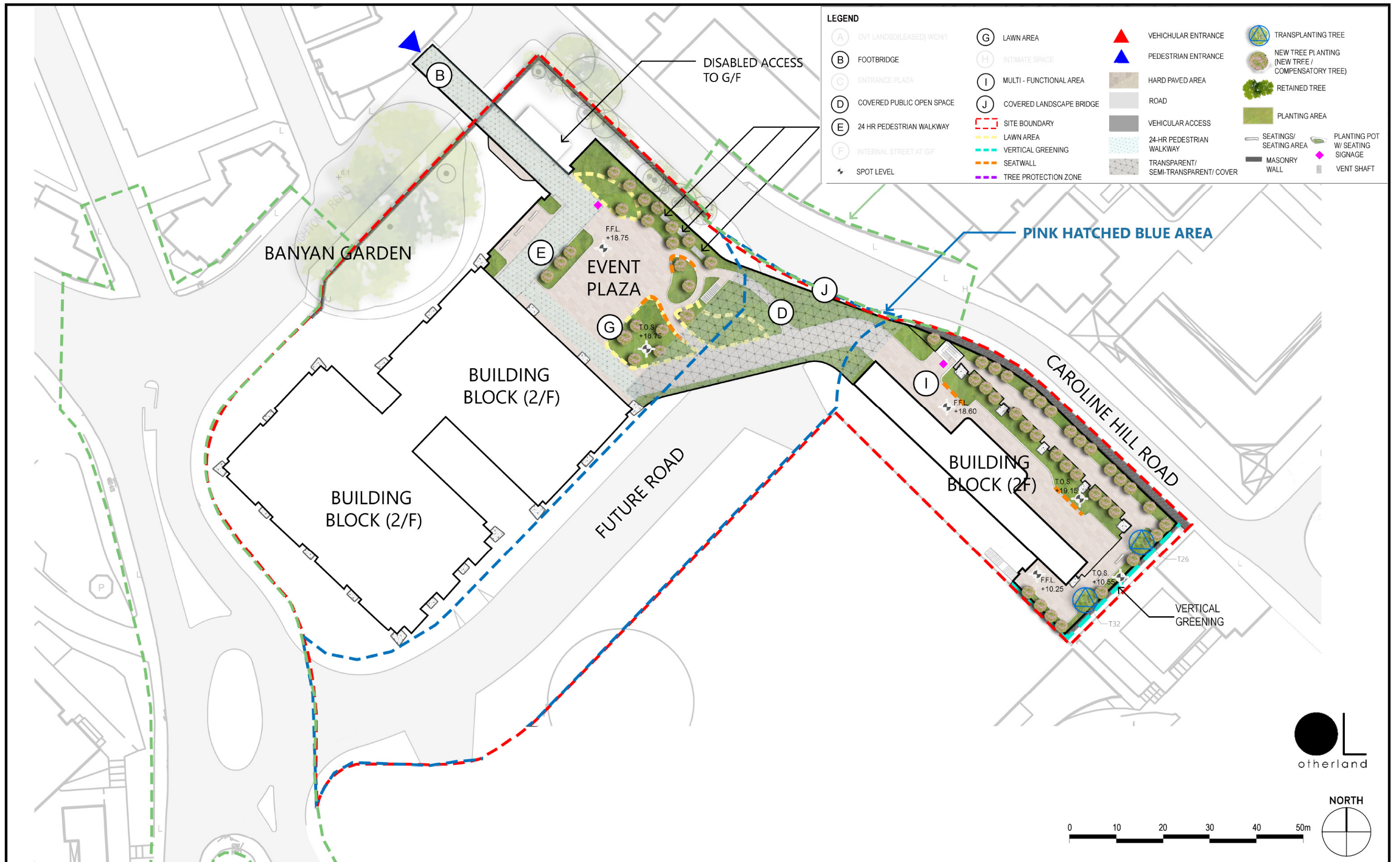
SET-BACK AT PODIUM LEVEL

SET-BACK AT PODIUM LEVEL TO ENHANCE AIR VENTILATION AT STREET LEVEL AND ALLOW A HIGHER DEGREE OF VISUAL OPENNESS



RONALD LU & PARTNERS







* IMAGE FOR REFERENCE ONLY, SUBJECT TO DETAIL DESIGN





* IMAGE FOR REFERENCE ONLY, SUBJECT TO DETAIL DESIGN

